

Substance Misuse Health and Adult Services Select Committee

Simon Bryant

Associate Director of Public Health

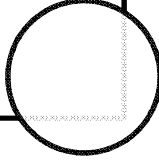
Ileana Cahill

Public Health Principal

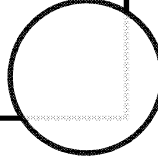
Hampshire County Council



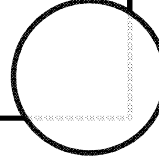
Drugs



Alcohol



Solvents



NPS



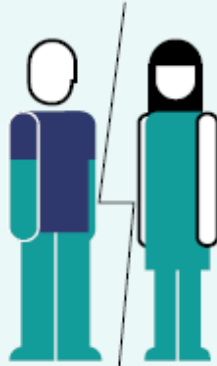
Prescription drugs



Alcohol misuse harms

1
2

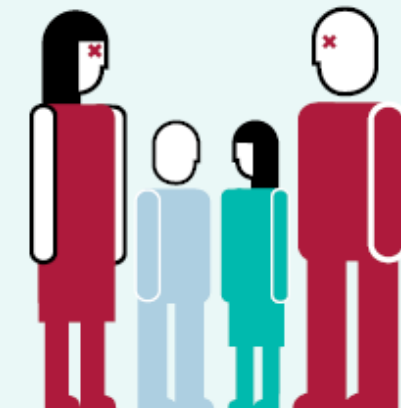
Almost **half**
of violent
assaults



Domestic
violence and
marital
breakdown



27% of
serious
case
reviews
mention
alcohol
misuse



Physical, psychological
and behavioural problems
for children of parents
with alcohol problems

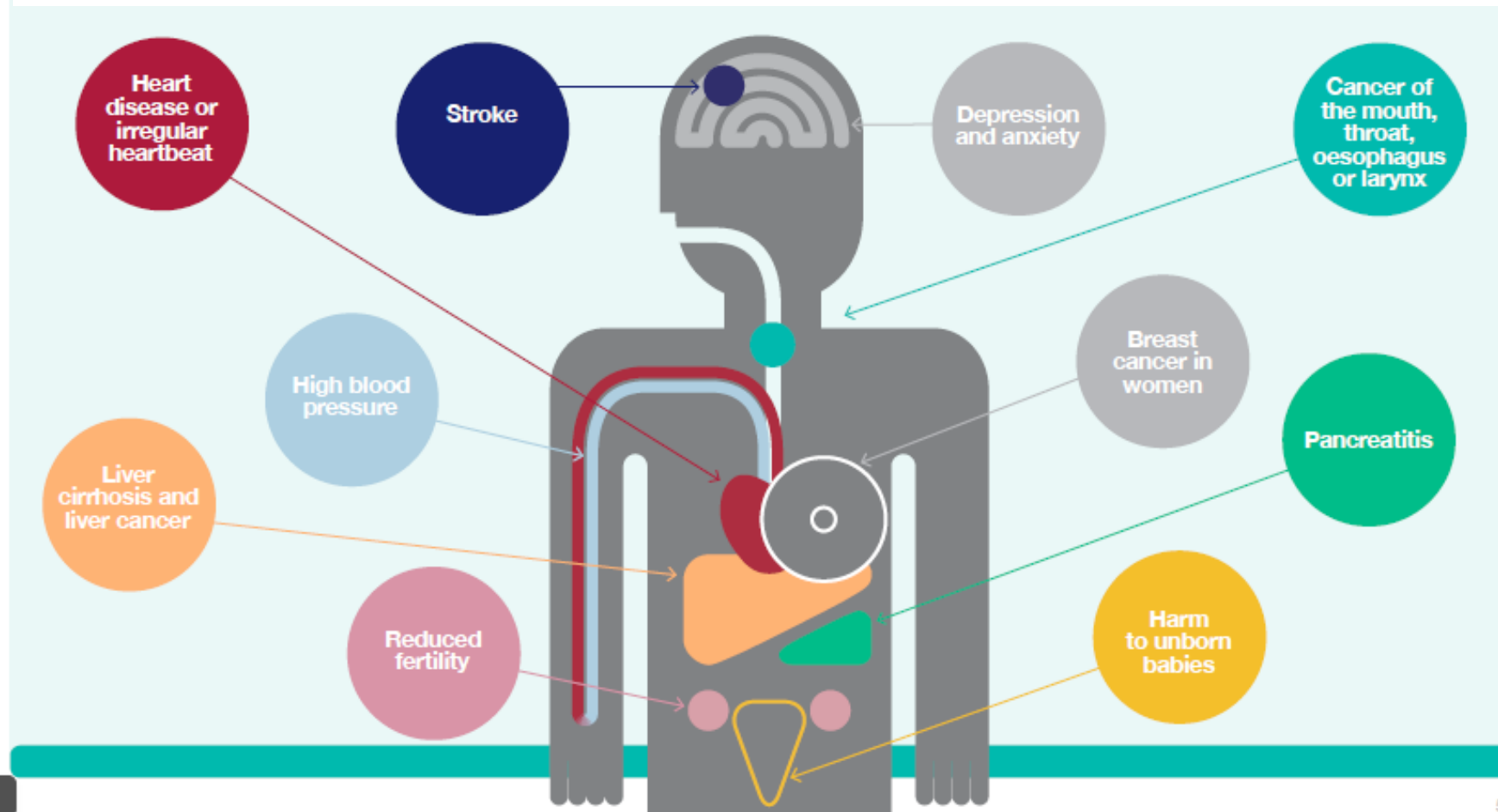


15% of road
fatalities



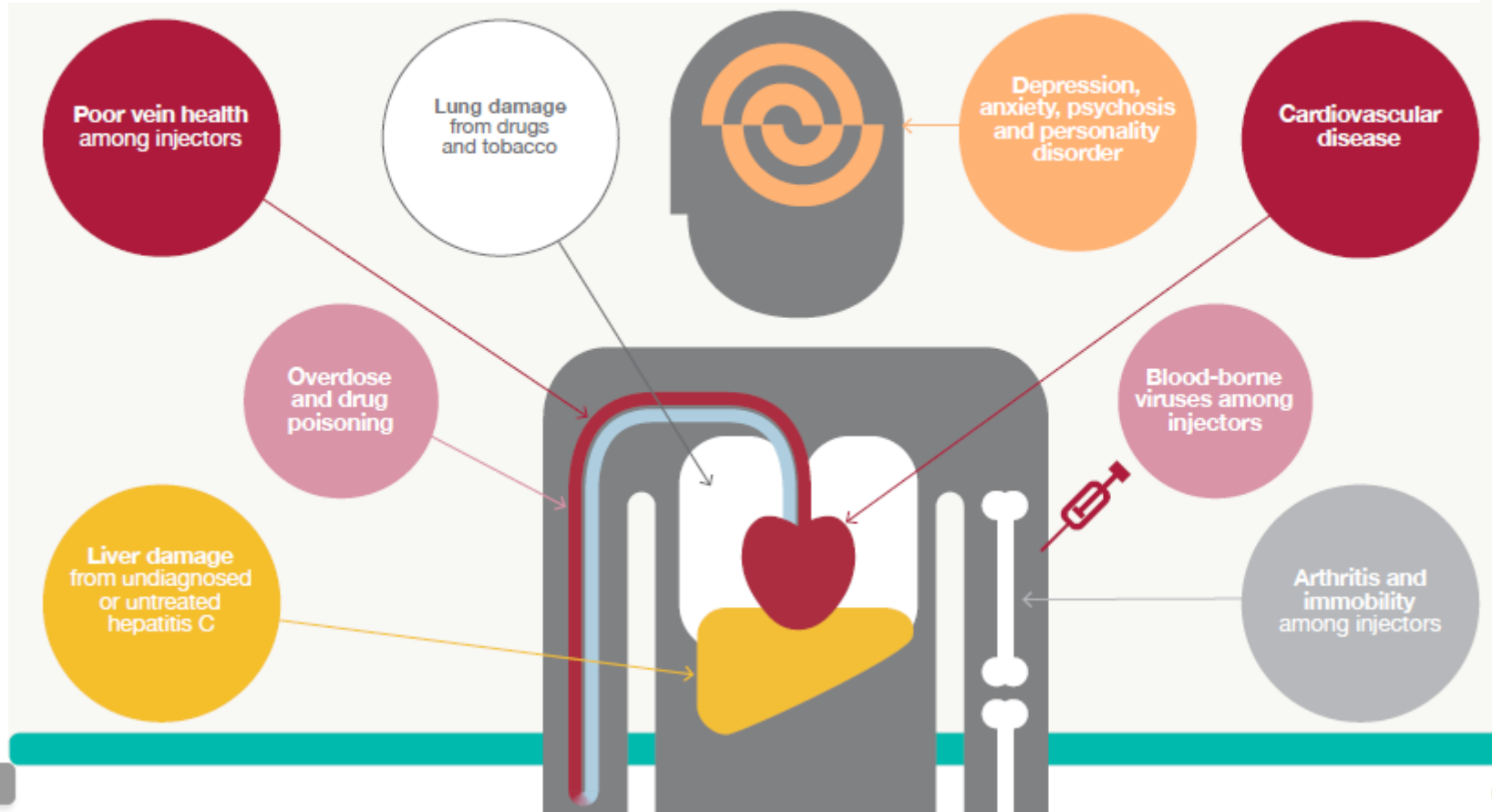
Alcohol Health Harms

Page 4



5

Drug misuse - Health Harms



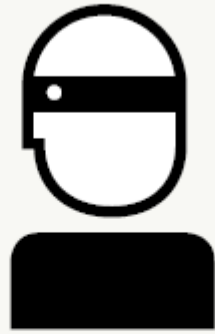
Page 5



Drug misuse harms



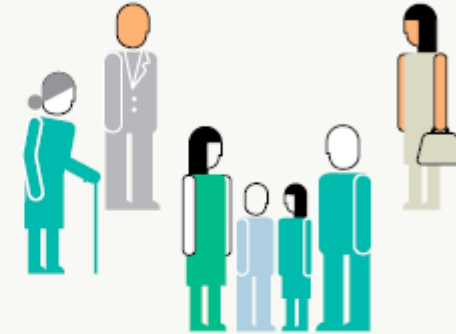
Parental drug use is a risk factor in **29%** of all serious case reviews



Heroin and crack addiction causes crime and disrupts community safety



A typical heroin user spends around **£1,400 per month** on drugs (2.5 times the average mortgage)



The public value drug treatment because it makes their communities safer and reduces crime. **82%** said treatment's greatest benefit was improved community safety



Invest to save

Page 7

Every 5,000 patients screened in primary care may prevent 67 A&E visits and 61 hospital admissions

Costs £25,000
Saves £90,000

One alcohol liaison nurse can prevent 97 A&E visits and 57 hospital admissions

Costs £60,000
Saves £90,000

Every 100 alcohol-dependent people treated can prevent 18 A&E visits and 22 hospital admissions

Costs £40,000
Saves £60,000



Every £1 spent on drug treatment saves £2.50 in costs to society



National Drugs Strategy



- Reducing Demand
- Restricting Supply
- Building recovery
- Global action

Hampshire's Strategic Drug and Alcohol Partnership - Substance misuse

Reducing demand and prevention

Restricting and disrupting supply in partnership with Police, Licencing, Trading standards and HMRC

Better recovery through new service models

Better intelligence

Hampshire's Strategic Drug and Alcohol Partnership – Alcohol

Reducing harm for individuals, families and communities

Prevention and early intervention

Promotion of recovery for dependent drinkers

Facilitating access for those who don't normally access services



Prevalence

1

Hampshire has an estimated

*4,043 Opiate and/or crack cocaine users.
Rank 15th of 151 local authorities*



*1,630 Injectors of opiates and/or crack cocaine.
Rank 55th of 151 local authorities*



*26.5% (or 1 in 5) Hampshire residents drink above the safe recommended levels for alcohol (over 14 units) each week.
This represents about 283,000 people*



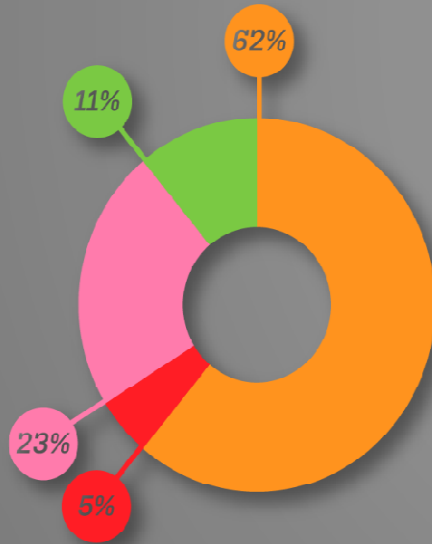
Service Users: Adult

1

3074 adults
accessing specialist
treatment, a 16.8%
increase on 2015/16

2015/16

2016/17



Substance Category % of those
in treatment

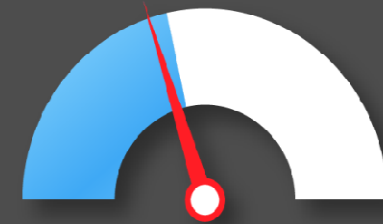
Opiate 62%

Non-opiate only 5%

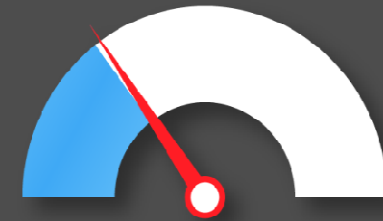
Alcohol only 23%

Alcohol and non-opiate only 11%

Time in treatment



43.5% Opiate clients
under 2 yrs
National average **40.1%**



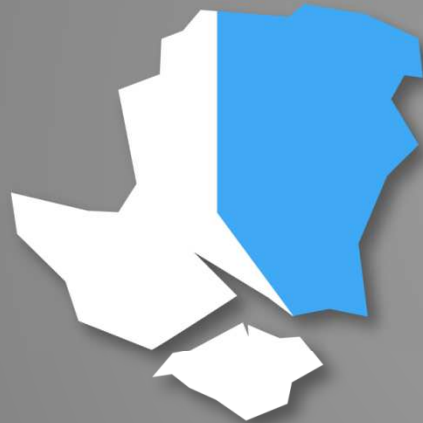
29.7% Opiate clients
under 6 yrs
National average **32.6%**



Pharmacy-based Drug Treatment Service

1

In 2016/17



97 (40%) pharmacies across Hampshire are able to offer a needle exchange service to injecting drug users



175 (73%) pharmacies across Hampshire are able to offer supervised consumption for those clients requiring opiate replacement therapy (ORT)

In 2017/18



948 people accessed pharmacies for a needle exchange service



403 people accessed pharmacies for their opiate replacement therapy (ORT)



Young People & Substance Misuse in Hampshire

Measure	Hants 2010	Hants 2012	Hants 2015	England 2014
11-15 year olds who have ever taken cannabis	7.8%	8.8%	8.7%	8%
11-15 year olds who have ever used solvents	6%	4.6%	4.3% ↓	6.4%
11-15 year olds who have ever taken NPSs	N/A	N/A	3.2%	2.5%
11-15 year olds who have had a whole alcoholic drink	58.5%	58.8%	49.2% ↓	38%

Hampshire Schools Survey 2015

Young People at high risk of misusing substances

Page 15

26,000 young people in poverty

Over ½ of adults accessing specialist adult substance misuse services have children

2,500 children in households experiencing domestic abuse

533 homeless families

245 pupils had a fixed-term exclusion

1,340 looked after children

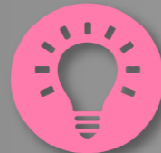
9,860 children in need



Service Users: Young people

1

268 young people accessing specialist treatment - 8% increase on 2015/16



113 young people accessing targeted support via education settings



Time in treatment
Average number of weeks
16.4 compared to 20



Waiting Times
99% receive first intervention within 3 weeks, up from 97%



Planned Exits
92% exit the service in a planned way compared to 82% Nationally



Service Users: Young people

3

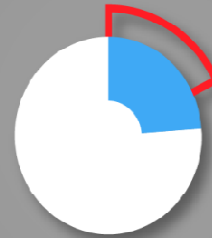
Specific and Wider Vulnerabilities



93% Early Onset of problematic substance misuse (under 15) Compared to 84% national



75% Poly drug users compared to 58% national



24% Mental Health issue compared to 18% national



65% of those accessing specialist treatment have parents who misuse substances

Substances cited in any episode



91% using Cannabis (National 88%)



59% using Alcohol (National 49%)



46% using Nicotine (National 17%)



18% using Ecstasy (National 11%)

Key elements of the Service

Empowering and enabling people to successfully manage and recover from their alcohol and/or drug dependency and the wider impacts of these.

Page 18

an adult substance misuse treatment service (medical and psychosocial interventions)

a specialist young people's substance misuse service (for people up the age of 25 years)

a pharmacy drug-treatment service.

Harm minimisation

Accessible needle exchange provision

Information and advice

Brief interventions

Structured treatment

Recovery capital

Peer mentoring programme

Access to in-patient detoxification

Carer and family support service

Specific offer for young people under 25 years

Opiate substitute prescribing and supervised consumption delivered
Blood borne virus screening and vaccination
Provision of Naloxone

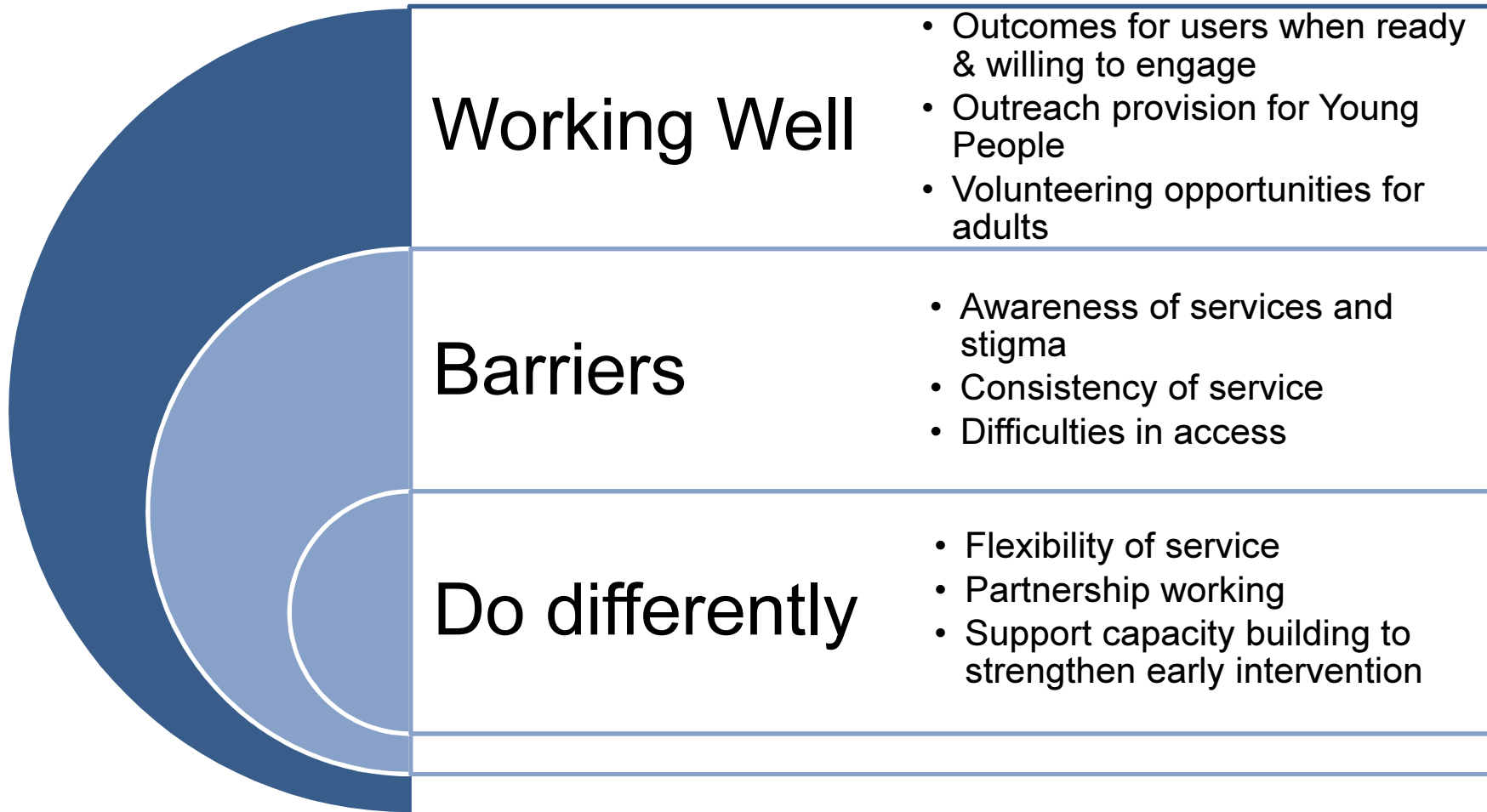
Comprehensive screening and assessment
Recovery planning
Pharmacological Interventions: maintenance; reduction; community detoxification and relapse prevention.
Psychosocial Therapies

Education, training and employment
Financial Independence
Healthy Lifestyles
Parenting & Family Support

Maintain and expand current programme
Supports service users in recovery, carers and other volunteers
Accredited training programme
Hepatitis C virus peer mentor programme

What do people tell us?

Page 20



Service Transformation

Alcohol

Adopting a whole family approach

Offering a holistic children and young people's substance misuse service up to the age of 25 years

Working with complex clients to promote recovery

Offering a flexible model of delivery

To Conclude

- Drug and alcohol issues
- Leadership by the strategic drug and alcohol partnership
- New service model to meet new issues and trends

